



How to Choose the Right Grandstream IP Camera for Your Needs



## VoIP Solutions

- IP PBX Appliance
- IP Multimedia Phones
- Enterprise IP Phones
- Small Business / Home Office IP Phones
- Analog VoIP Gateways
- Analog Telephone Adapter

## IP Surveillance Solutions

- Indoor IP Cameras
- Outdoor IP Cameras
- IP Video Encoders
- Video Management Software

## Indoor/Outdoor Cameras



GXV3662  
Series



GXV3672  
Series



GXV3610 series



GXV3674\_VF  
Series

## Indoor Cameras



GXV3601\_HD



GXV3651\_FHD



GXV3615WP\_HD



GXV3611\_HD

# How to tell which Grandstream IP Video Surveillance Camera is Right for You



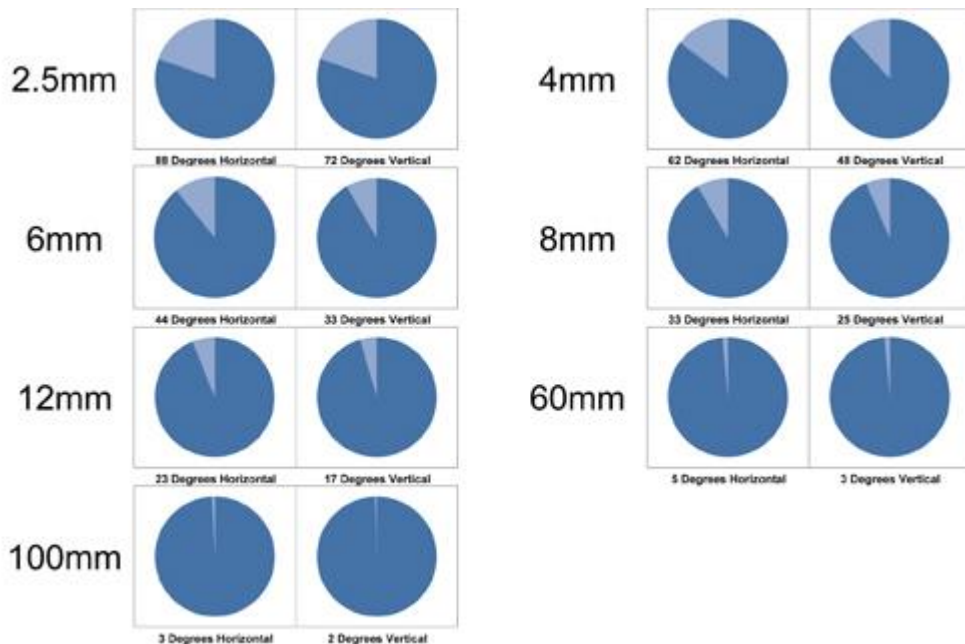
## 1. Indoor or Outdoor use?

- Outdoor cameras are IP-66 weatherproof certified
- Many outdoor cameras feature Infrared sensors for excellent performance in low-light or no-light

## 2. What needs to be monitored/recorded?

- Light concerns (IR needed) or no light concern?
- The angle that needs to be monitored and it's proximity from the camera location?
  - Camera's millimeter spec tells you what angle the camera is meant to monitor
  - Variable-focal cameras have adjustable lens

# The Lens' Millimeter (mm) spec tells the story...

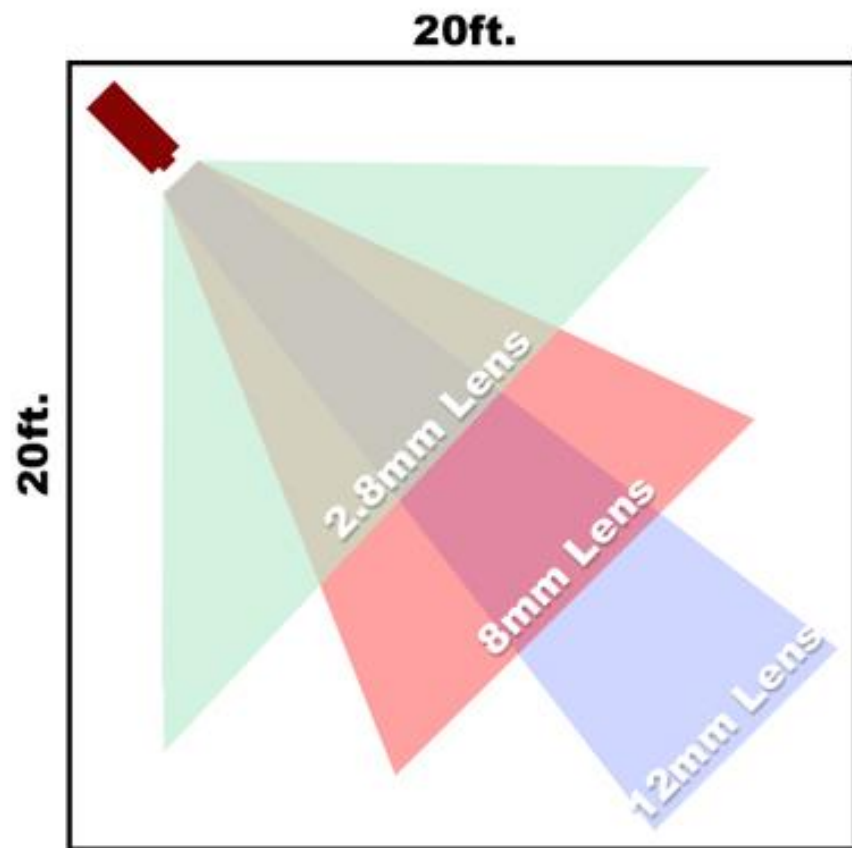


**2mm – 6mm**

close-proximity, wide angle

**8mm +**

distant proximity, thin angle





### 3.6mm Models

GXV 3610\_HD/FHD  
GXV 3672\_HD/FHD\_36



### 8mm Model

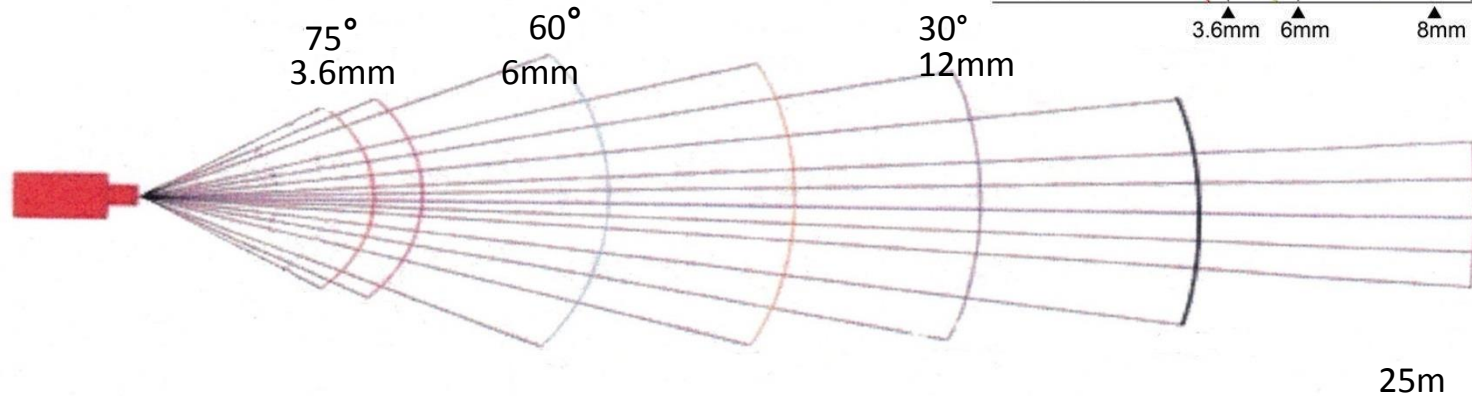
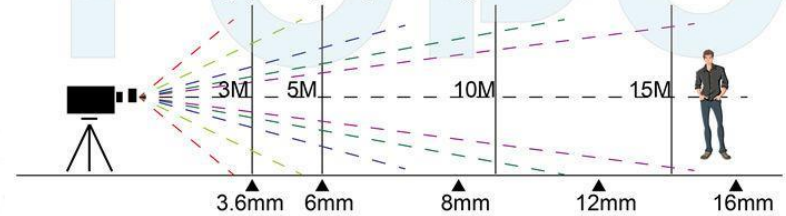
GXV 3672\_HD/FHD



#### How to choose a lens

LENS	4MM	6MM	8MM	12MM	16MM
Monitoring angle	69.9°	50°	38.5°	26.2°	19.8°
Monitoring distance	0-6M	5-10M	10-20M	20-35M	35-50M

Lens numerical large, far-sighted, small-angle



GXV3674 series

## Indoor/Outdoor Cameras



GXV3662  
Series



GXV3672  
Series



GXV3610 series



GXV3674\_VF  
Series

## Indoor Cameras



GXV3601\_HD



GXV3651\_FHD

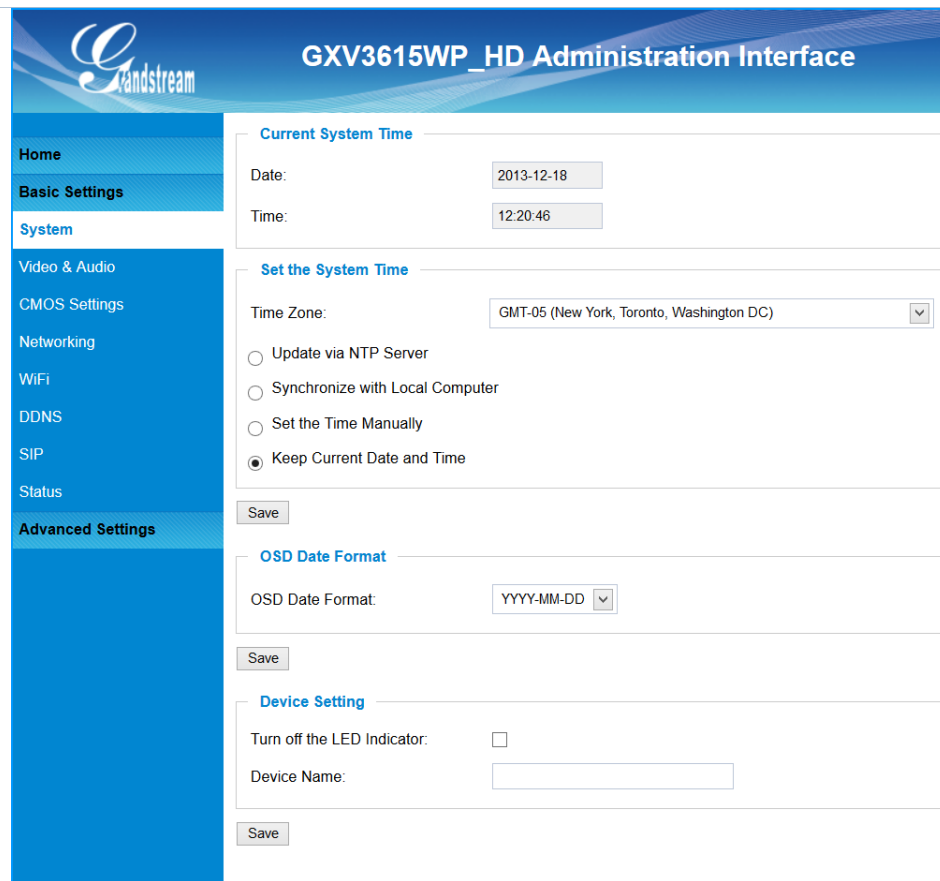


GXV3615WP\_HD



GXV3611\_HD

## Web User Interface



The screenshot shows the Grandstream GXV3615WP\_HD Administration Interface. The interface has a blue header with the Grandstream logo and the title "GXV3615WP\_HD Administration Interface". On the left is a navigation menu with categories: Home, Basic Settings, System, Video & Audio, CMOS Settings, Networking, WiFi, DDNS, SIP, Status, and Advanced Settings. The main content area is divided into three sections: "Current System Time", "Set the System Time", and "OSD Date Format".

**Current System Time**

Date: 2013-12-18  
Time: 12:20:46

**Set the System Time**

Time Zone: GMT-05 (New York, Toronto, Washington DC) [v]

Update via NTP Server  
 Synchronize with Local Computer  
 Set the Time Manually  
 Keep Current Date and Time

Save

**OSD Date Format**

OSD Date Format: YYYY-MM-DD [v]

Save

**Device Setting**

Turn off the LED Indicator:   
Device Name: [text input]

Save





**GXV3615WP\_HD Administration Interface**

**Alarm HTTP Server Settings**

Server Name:

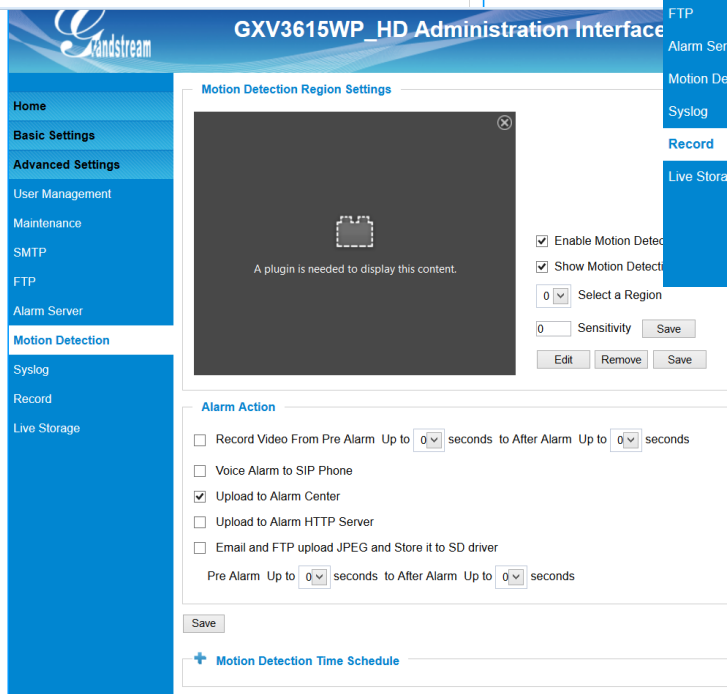
URL:

User Name:

Password:

**Navigation Menu:** Home, Basic Settings, Advanced Settings, User Management, Maintenance, SMTP, FTP, Alarm Server, Motion Detection, Syslog, Record, Live Storage

*Alarm settings*



**GXV3615WP\_HD Administration Interface**

**Motion Detection Region Settings**

Enable Motion Detection

Show Motion Detection

0 Select a Region

0 Sensitivity

**Alarm Action**

Record Video From Pre Alarm Up to 0 seconds to After Alarm Up to 0 seconds

Voice Alarm to SIP Phone

Upload to Alarm Center

Upload to Alarm HTTP Server

Email and FTP upload JPEG and Store it to SD driver

Pre Alarm Up to 0 seconds to After Alarm Up to 0 seconds

**Motion Detection Time Schedule**

*Motion Detection*



**GXV3615WP\_HD Administration Interface**

**Record Settings**

Enable Record Schedule:

	0	1	2	3	4	5	6	7	8	9	10	11	12	13	14	15	16	17	18	19	20	21	22	23
S																								
M																								
T																								
W																								
T																								
F																								
S																								

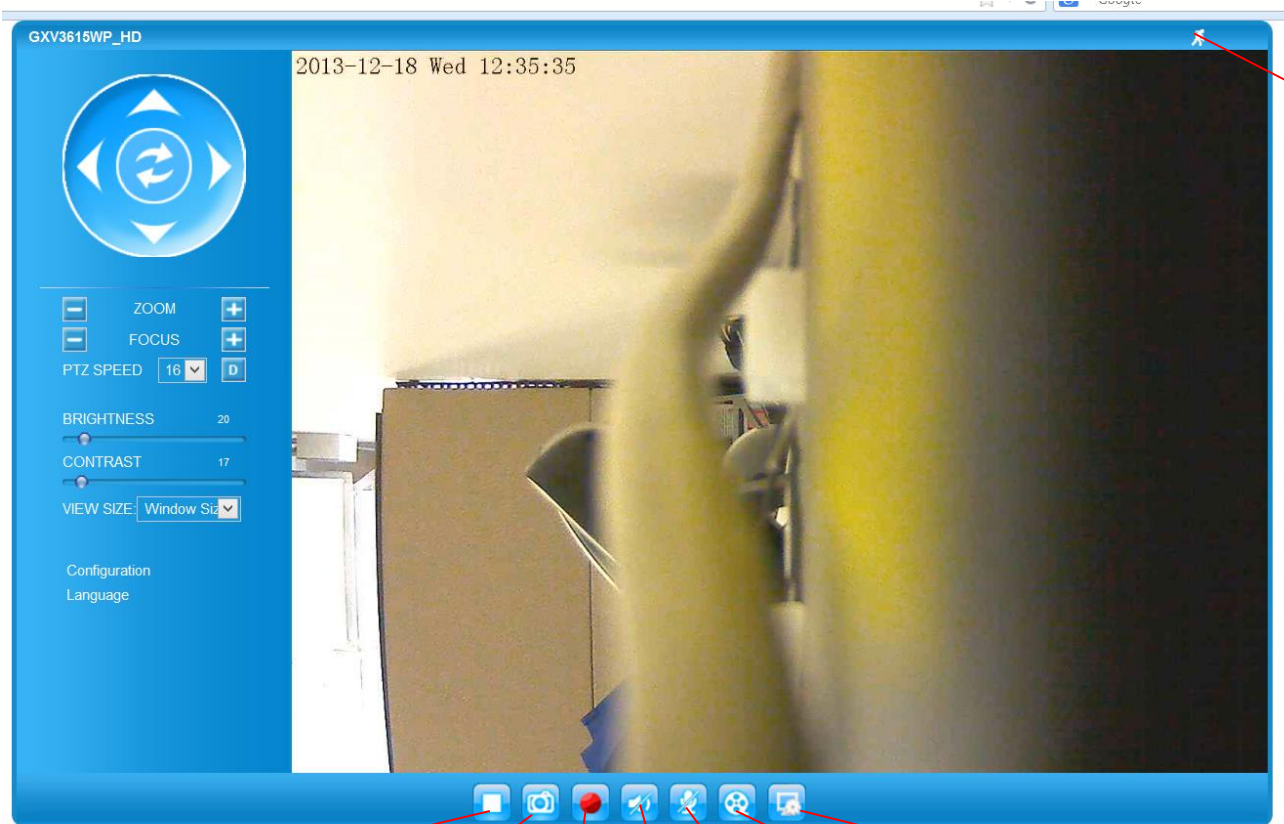
Copy: Sunday To: All

**Manual Recording**

Manual Recording:

**Navigation Menu:** Home, Basic Settings, Advanced Settings, User Management, Maintenance, SMTP, FTP, Alarm Server, Motion Detection, Syslog, Record, Live Storage

*Recording schedules*



Motion  
Detection  
settings

Stop  
Capture  
Start/Stop  
Recording  
Audio  
On/off  
Talk  
(2-way  
audio)  
Local  
Config  
Playback

# Grandstream Networks, Inc.

## Indoor Cameras



GXV3601\_HD



GXV3651\_FHD



GXV3615WP\_HD



GXV3611\_HD

# GXV3601\_HD



- **HD (720p) IP camera**
- 2M pixel Aptina CMOS sensor
- PoE
- Support for 2-way audio paging and SIP/VoIP

- **Full HD (1080p) IP camera**
- 5M pixel CMOS sensor
- **Integrated IR\_CUT and light sensor for low light and night condition**
- Embedded Image Sensor Processing (ISP) technology

## GXV3651\_FHD





# GXV3611\_HD

- HD (720p) IP camera with 2M pixel
- Aptina CMOS sensor
- PoE
- Integrated microphone and speaker
- **Support for 2-way audio paging and SIP/VoIP**





# GXV3615WP\_HD

- HD (720p) Cube IP camera with CMOS sensor
- PoE
- Integrated WiFi (802.11 b/g/n)
- Integrated microphone and speaker
- Micro SD
- **Support for 2-way audio paging and SIP/VoIP**

# **Grandstream Networks, Inc.**

## **Indoor/Outdoor Cameras**



GXV3662 Series



GXV3672 Series



GXV3610 series



GXV3674\_VF Series

## GXV3662 Series



- HD (720p) IP camera or FHD (1080p) models
- **Vandal-resistant**
- **Tamper proof**
- **IP66 weather-proof**
- 1.2M pixel CMOS sensor
- Day/night mode with light sensor and mechanical IR\_CUT
- Integrated heater and fan





## GXV3672 series

- **infrared HD (720p) IP camera**
- **IP66 weather – proof**
- 720p recording option (\_HD) and 1080p option (\_FHD)
- 1.2 megapixel CMOS sensor (\_HD) or 3.1 megapixel (\_FHD)
- Day/Night mode with light sensor and mechanical IR\_CUT
- Integrated PoE and heater
- **8mm lens**



# GXV3672\_36\_HD/FHD

**NEW!**

- *Adds a 3.6mm lens option to the GXV3672 series*
- **infrared full HD (1080p) IP camera**
- **IP66 weather – proof**
- 3.1M pixel CMOS sensor  
Day/Night mode with light sensor and mechanical IR\_CUT
- Integrated PoE and heater



# GXV3674\_VF Series

**NEW!**

- ❑ Our first Variable-Focal IP Camera
- ❑ Manual Vari-focal from 3mm – 12mm
- ❑ Infrared IP Camera
- ❑ HD and FHD versions
- ❑ IP66 weather-proof
- ❑ 1.2M pixel CMOS sensor
- ❑ Day/night mode with light sensor and mechanical IR\_CUT



**NEW!**



## GXV3610 series

- infrared HD IP camera
- IP66 weather – proof
- 720p recording option (\_HD) and 1080p option (\_FHD)
- 1.2 megapixel CMOS sensor (\_HD) or 3.1 megapixel (\_FHD)
- Day/Night mode with light sensor and mechanical IR\_CUT
- Integrated PoE and heater
- **2-way audio**
- 3.6mm lens

# Grandstream Networks, Inc.

## IP Video Encoders & Decoder





# GXV3500



- H.264 ONVIF compliant single channel video encoder + decoder 2-in-one combo
- **Encoder + Decoder + P.A.S.**
- Rich peripheral interfaces
- TV-out
- Integrated PoE
- Support for 2-way audio paging using SIP/VoIP



# GXV3504

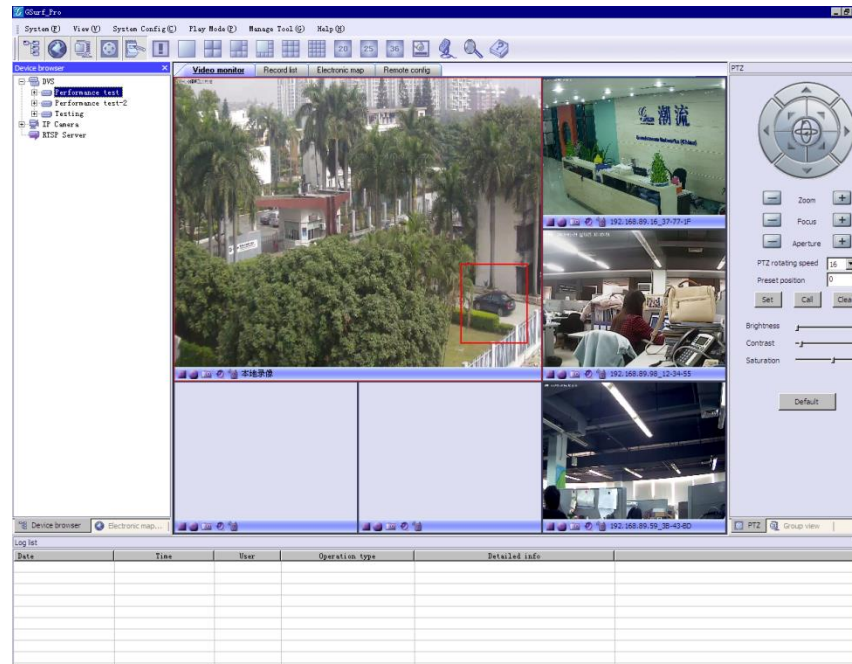
- H.264 ONVIF compliant 4-channel IP video encoder
- Rich peripheral interfaces
- Flexible control
- Integrated PoE
- Support for 2-way audio paging and SIP/VoIP



# Grandstream Networks, Inc.

## GSurf\_Pro

### Video Management Software



The screenshot shows the GSurf\_Pro software interface. The main window is divided into several sections:

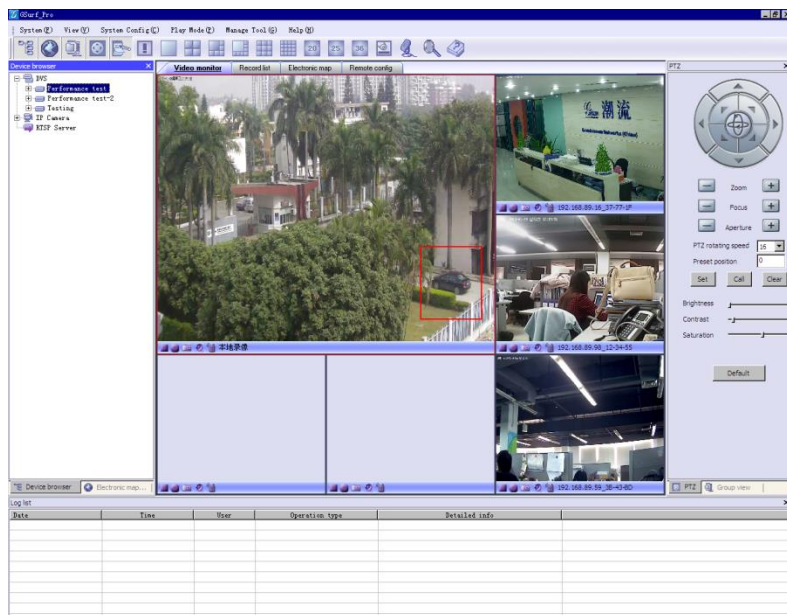
- Menu Bar:** System, View, System Config, Play Mode, Manage Tool, Help.
- Toolbar:** Various icons for navigation and camera control.
- Device Browser:** A tree view on the left showing a hierarchy of devices including 'SYS', 'Performance test', 'Performance test-2', 'IP Testing', 'IP Camera', and 'RTP Server'.
- Main Video Area:** A large window displaying multiple camera feeds. The top-left feed shows an outdoor scene with palm trees and a building. The top-right feed shows an indoor office scene with a reception desk. Below these are several smaller feeds showing different indoor office environments. A red box highlights a car in the outdoor feed.
- PTZ Control Panel:** A circular directional pad for panning, and various controls for zoom, focus, aperture, PTZ rotating speed, and preset positions. Sliders for brightness, contrast, and saturation are also present.
- Log List:** A table at the bottom of the interface with columns for Date, Time, User, Operation type, and Detailed info.

Date	Time	User	Operation type	Detailed info

**FREE!**

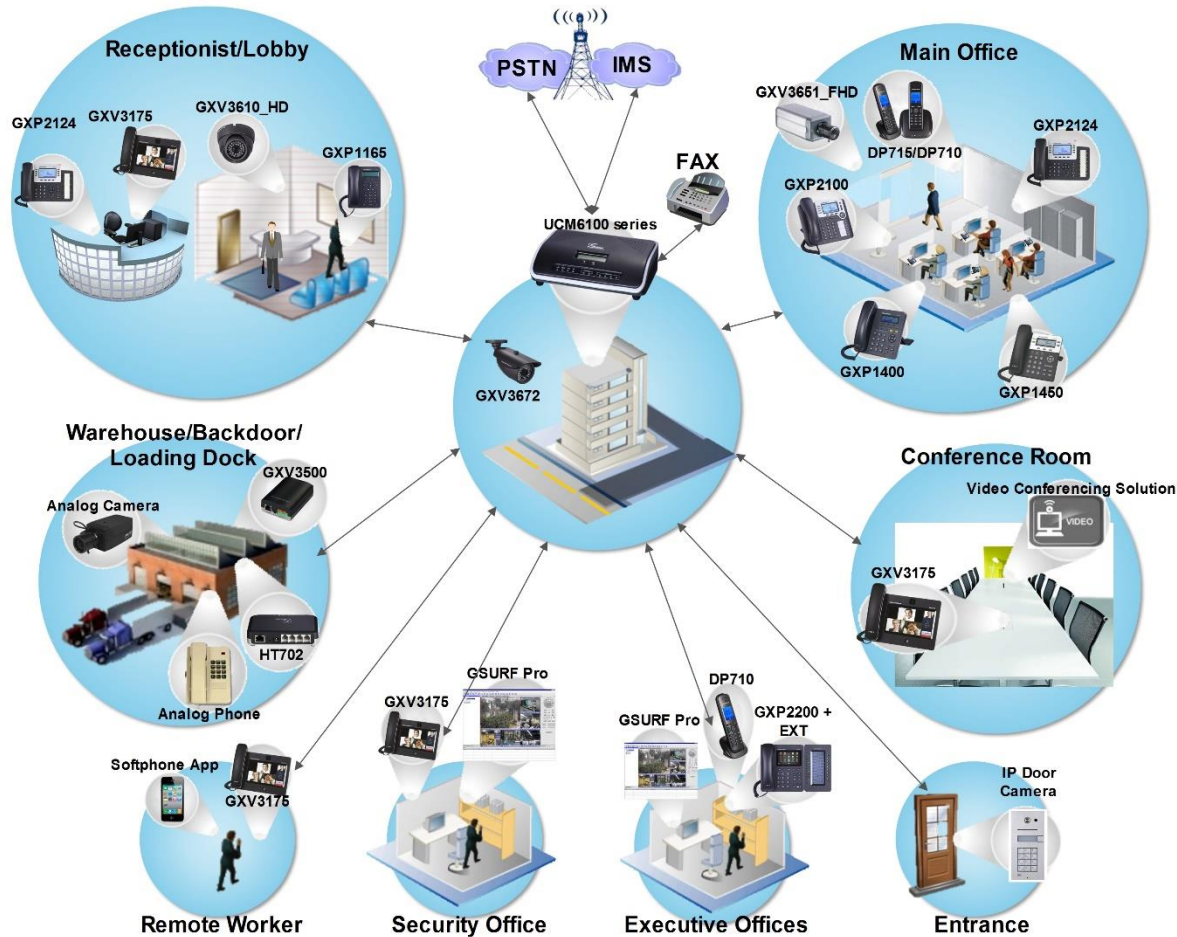
# GSurf\_PRO

## Video Management Software



- Simultaneous playback/recording of up to **72** cameras
- Client/Server architecture with e-Map support
- “Add & Go” Transmit Server allows multi-point viewing same live video
- Record File Sharing Server allows remote clients to download and replay local server records
- Convert recorded H.264 video to AVI format for convenient video portability

# Make it a Solution...





# Make it a Solution...

## Register Grandstream's SIP cameras to an IP PBX



- Make video calls to IP cameras to see live feeds
- Set cameras to call video device (IP Video phones) when alert/alarm is triggered
- Cameras can send you an email or screen capture
- To communicate with IP Door Cameras, etc.
- 2-way video/audio calls to/from cameras thanks to SIP/VoIP support
  - *GXV3610 series, GXV3611\_HD, GXV3615 series feature built-in microphone and speaker*



1. Receive Video Calls from Video Cameras
2. Make Video Calls to Video Cameras



# UCM6100 Series

*Delivering high quality, secure and reliable voice, video, data & mobility to SMBs*



# UCM6100 Series IP PBX Appliance

*Aggressively priced for the SMB market*



UCM6102

UCM6104



UCM6108

UCM6116



### Voice

Secure, clear, and reliable

Conferencing

Comprehensive Codec Support

Endless Customizable Voice features

### Data

Phonebook files

CDR

Codec Transcoding

System Backup

Call Recording

Voicemail/fax to email



### Mobility

Softphone apps

Monitor your business

Connect Multiple Offices

### Video

Face to face video calls

Video Surveillance Integration

SIP Video

Video Codec Support

# UCM6100 Series

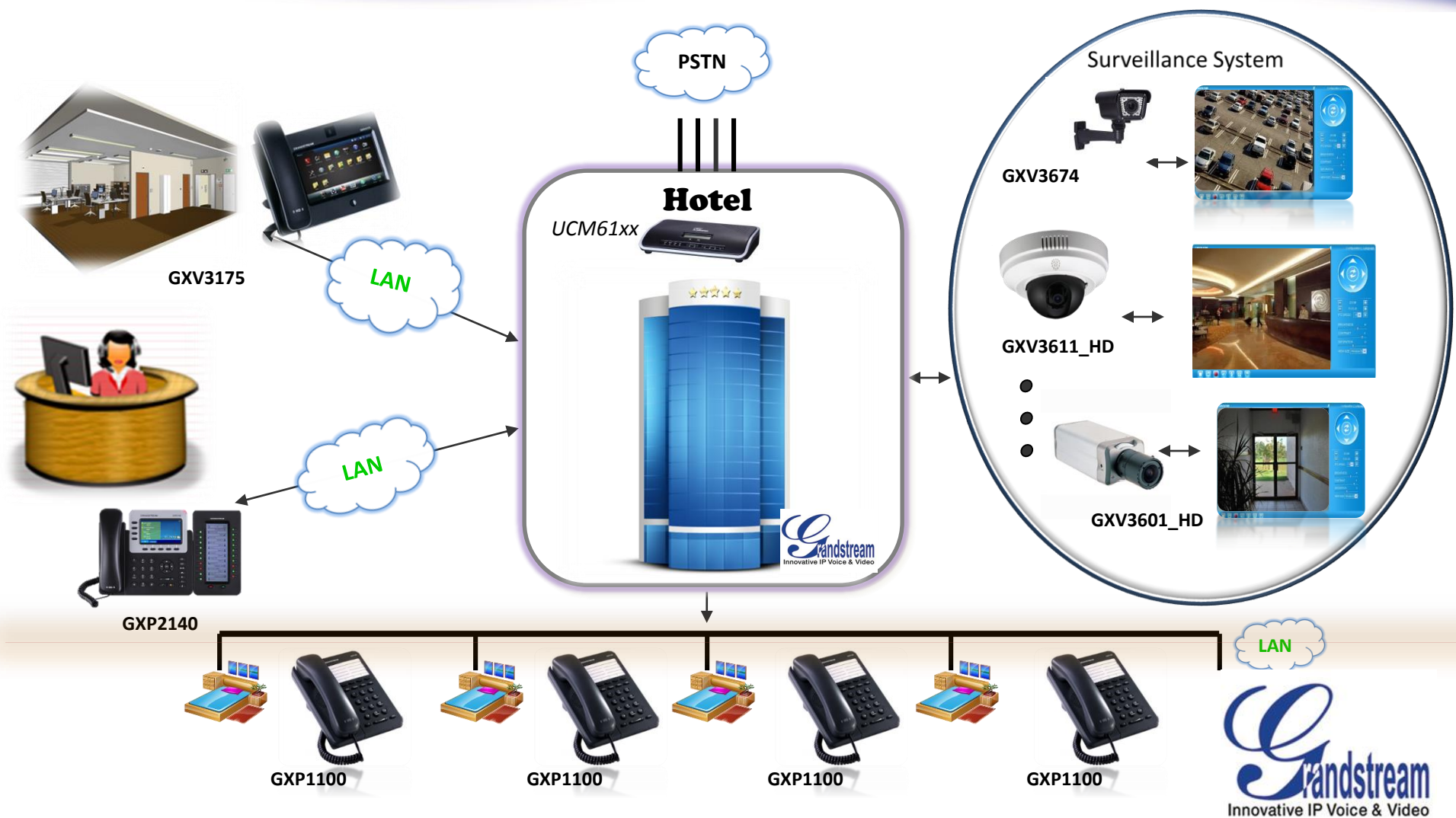
## Video Surveillance Integration



- ◆ Create a comprehensive solution to view, monitor and receive alerts from IP cameras
- ◆ Register IP cameras to the PBX
- ◆ Make video calls to IP cameras to view live feeds
- ◆ Speak through cameras with 2-way audio & video (door entry)
- ◆ IP cameras can be set to automatically call video phone when alert is triggered
- ◆ Receive alerts from anywhere in the world



# Enhance your Business with Grandstream Products: Hotel

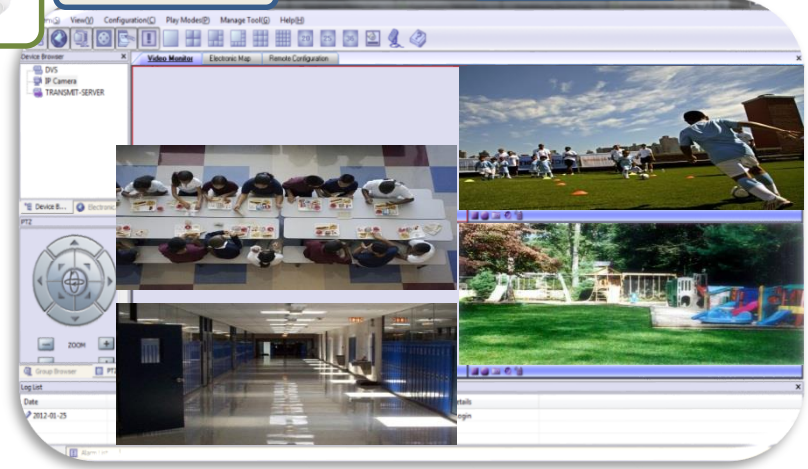


# Enhance your Business with Grandstream Products: School



**GXV3611 HD**

**GXV3672**



**GXV3610**

**Gsurf**

**GXV3672**



# Enhance your Business with Grandstream Products: Office

